

Date	Revision
11/09/22	New Map - Housekeeping Cleanup



OPEN SPACE and TRAIL MAP SKIPPACK TOWNSHIP MONTGOMERY COUNTY, PENNSYLVANIA

Map prepared by:
Woodrow & Associates, Inc.
1108 N. Bethlehem Pike
Ambler, Pennsylvania

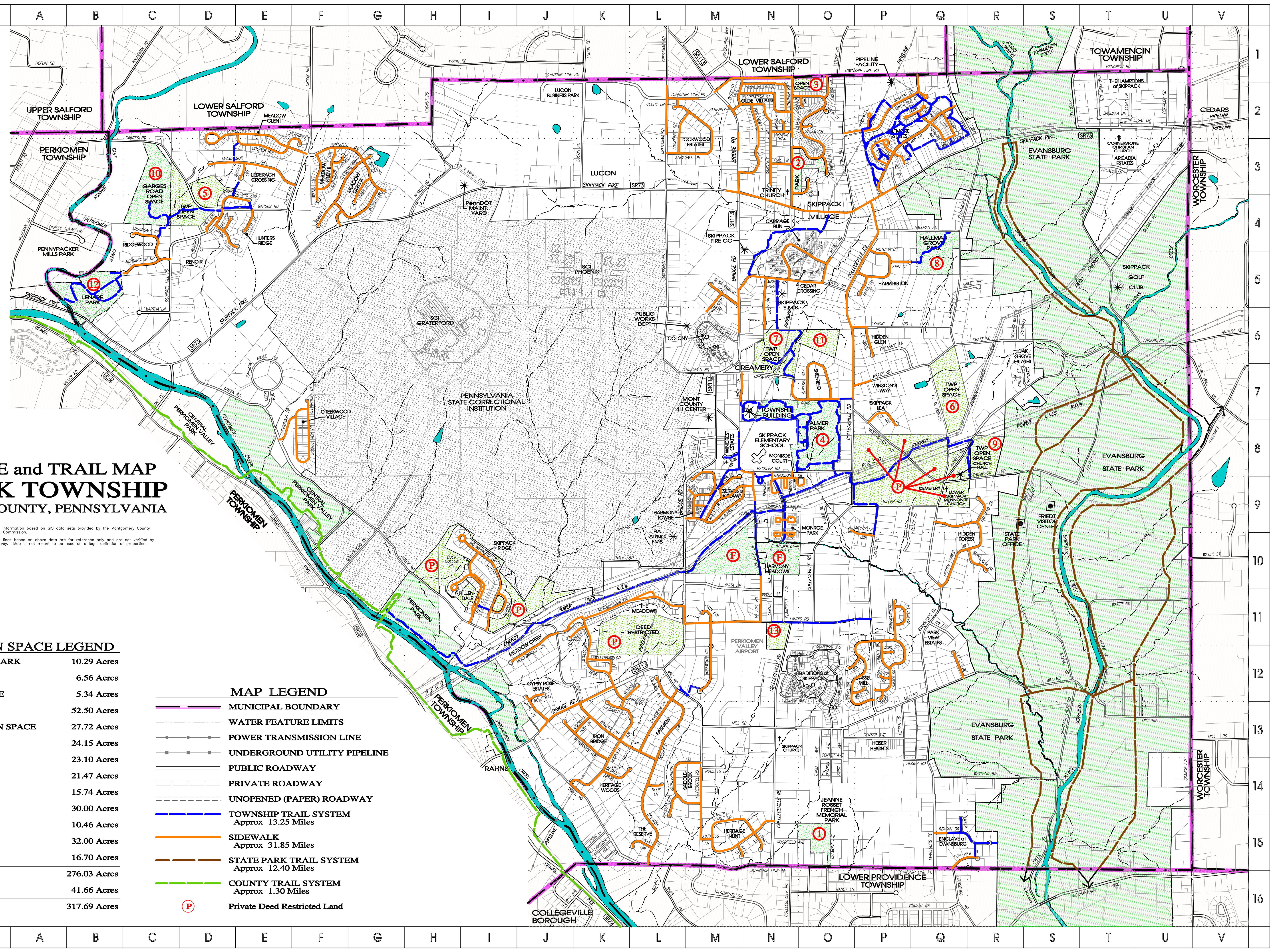
Mapping information based on GIS data sets provided by the Montgomery County Planning Commission.
Property lines based on above data are for reference only and are not verified by field survey. Map is not meant to be used as a legal definition of properties.

TOWNSHIP OPEN SPACE LEGEND

①	FRENCH MEMORIAL PARK	10.29 Acres
②	CHURCH ROAD PARK	6.56 Acres
③	TWP LINE OPEN SPACE	5.34 Acres
④	PALMER PARK	52.50 Acres
⑤	HUNTERS RIDGE OPEN SPACE	27.72 Acres
⑥	MCGINNIS	24.15 Acres
⑦	CHOLET	23.10 Acres
⑧	HALLMAN GROVE	21.47 Acres
⑨	THOMPSON ROAD	15.74 Acres
⑩	EDMONSON	30.00 Acres
⑪	KRATZ	10.46 Acres
⑫	LENAPE	32.00 Acres
⑬	AIRPORT	16.70 Acres
Ⓣ	GORSKI - FUTURE	41.66 Acres
TOTAL AREA:		276.03 Acres
TOTAL AREA:		317.69 Acres

MAP LEGEND

- MUNICIPAL BOUNDARY
- WATER FEATURE LIMITS
- POWER TRANSMISSION LINE
- UNDERGROUND UTILITY PIPELINE
- PUBLIC ROADWAY
- PRIVATE ROADWAY
- UNOPENED (PAPER) ROADWAY
- TOWNSHIP TRAIL SYSTEM
Approx 12.25 Miles
- SIDEWALK
Approx 31.85 Miles
- STATE PARK TRAIL SYSTEM
Approx 12.40 Miles
- COUNTY TRAIL SYSTEM
Approx 1.30 Miles
- Private Deed Restricted Land



Project No: 12-0025 - Project Name: COMPREHENSIVE PLAN MAPS - Print Date: Nov 9, 2022 (16:35) - File Path: G:\1997\97-0214\Skippack Map\ 2022.dwg